



2025
TUCSON



DEF



Lead with style. In an SUV that leads, period.

There's no blending in when you're in the Hyundai Tucson – and Tucson drivers wouldn't have it any other way. With updated styling for 2025, Tucson expresses the advanced design language of Hyundai in a bold new way. You can see it articulated in surfaces that have the kinetic energy of a cut gemstone. And in fresh angles carved into the front and rear, extending the look from top to bottom.

Could it get more distinctive? Tucson's dazzling cluster of LED Daytime Running Lights answers in unequivocal fashion with a fresh new look for 2025. Hidden within the front grille, they come to life when illuminated, projecting the unmistakable signature of Tucson.

Step inside, and a spacious interior greets you with clean lines and attractive surfaces. Completely restyled for 2025, the dash is defined by an uncluttered horizontal design

reminiscent of modern architecture. It's topped by a larger 12.3" touchscreen that tells you Tucson is loaded with connectivity and convenience technologies – like wireless Apple CarPlay® and Android Auto,™ standard on all models.¹

As you drive, Hyundai SmartSense – our suite of advanced safety and driver-assistance technologies – helps protect you from all sides.² And when you park, new available features like Hyundai Pay let you pay for parking using that striking touchscreen,³ while Remote Smart Parking Assist lets you step outside and remotely guide your Tucson into tight spaces.

The more angles of the Hyundai Tucson you see, the more you understand why the editors of *U.S. News & World Report* named Tucson the 2024 Best Compact SUV for the Money and 2024 Best Compact SUV for Families.⁴



¹ Apple is a registered trademark of Apple Inc. Android Auto™ is compatible with Android™ phones running Android 5.0 or higher. Android Auto may not be available on all devices. Additional apps may be required. Android and Android Auto are trademarks of Google LLC. ² Safety features vary by model and trim level. For details, refer to the Features section in this brochure or visit HyundaiUSA.com. ³ Hyundai Pay requires MyHyundai mobile app and an active Bluelink subscription agreement, subject to the Connected Services Terms and Conditions. For eligible vehicles, Hyundai Pay is included with Bluelink subscription at no additional cost. Cellular and GPS coverage is required. Only use Bluelink features and corresponding devices when safe to do so. Valid Visa, MasterCard, or American Express credit card must be linked to MyHyundai account with Bluelink. Accepted by participating merchants for off-street reserved parking only. Availability of such services may change over time and may vary by vehicle and geographic location. Additional merchant terms and fees may apply. Participating merchants may not operate in all locations. Features, specifications, and fees are subject to change. Visit owners.hyundaiusa.com for more information. ⁴ View U.S. News Best Cars at cars.usnews.com.

TUCSON Limited in Atlantis Blue



Stand out in the way you move, too.

TUCSON Limited in Atlantis Blue

Wherever you journey, Tucson leads the way with fun-to-drive performance to match its style. Power comes from a spirited Smartstream 2.5L gas engine with an 8-speed automatic transmission. Smart features like Idle Stop & Go help Tucson excel at fuel economy, too: With front wheel drive, you'll get up to an EPA-estimated 28 combined MPG.¹

The poise flowing from steering and suspension enhancements makes your ride feel as refined as it is responsive. And with Drive Mode Select, you can tailor Tucson's dynamics to your personal preference: Normal, Sport, Snow (when equipped with AWD) or a new My Drive setting that lets you dial in your own driving style.

To help you stay focused on the road ahead, a newly available full-color Head-up Display can project your vital driving data onto the windshield in fighter-jet fashion.

Like to journey off the expected path? Available HTRAC All Wheel Drive helps confidently pull you through challenging road conditions. To fully express that kind of confidence and capability, we've outfitted the Tucson XRT with an exclusive smoked chrome grille and black alloy wheels with machine-burnished outer surfaces – then topped it with raised roof rails and beefier body cladding.

¹ EPA estimates for comparison only. Mileage may vary. Your actual mileage will vary with options, driving conditions, driving habits and the vehicle's condition. ² Safety features vary by model and trim level. For details, refer to the Features chart in this brochure or visit HyundaiUSA.com. ³ Forward Collision-Avoidance Assist with Junction Turning (FCA-JT) is intended to be a supplement to safe driving practices. The system is not designed to detect certain stationary objects such as trees or poles, and may not detect all vehicles, pedestrians or cyclists under certain conditions. The system's Junction Turning function operates when the vehicle's left turn signal is activated, the vehicle is traveling between approximately 6-19 mph and the oncoming vehicle's speed is between approximately 19-44 mph. The system is a driver assistance system and is not a substitute for safe driving. The driver is responsible for being attentive and maintaining control of the vehicle, and should not wait for the system's alerts before braking as there may not be sufficient time to brake safely. See Owner's Manual for details and limitations. ⁴ Lane Keeping Assist operates only when the lane markings are clearly visible on the road. It will not work under all circumstances and will not prevent loss of control. It is a supplemental assist and does not replace the need for extreme care and attention by the driver. It uses a camera in the upper windshield area, so it is imperative this area be free of blockage such as stickers, dirt, snow, tinting material, markings and labels. Avoid putting objects on the dashboard that may reflect light or images onto the system camera area. See Owner's Manual for details and limitations. ⁵ It is the driver's responsibility to remain alert at all times. Driver Attention Warning is only a warning to inform the driver of a potential lack of driver attention or drowsiness. It does not detect and provide an alert in every situation. See Owner's Manual for details and limitations. ⁶ Blind-Spot Collision Warning (BCW) warns you of other cars in the blind-spot region to help prevent an unsafe lane change. It also helps prevent collisions when exiting parallel parking spots by alerting the driver to a potential hazard. Never rely exclusively on BCW as it is not a substitute for attentive driving. Always look over your shoulder and use your mirrors to confirm clearance. There are limitations to the function, detection, range and clarity of the system. BCW may not function correctly if one or more of the parking sensors is damaged, dirty or covered, or if weather conditions (heavy rain, snow or fog) are interfering with sensor operation. See Owner's Manual for details and limitations. ⁷ The Blind-Spot View Monitor (BVM) assists the driver in changing lanes by providing a live view of the blind spots on either side of the vehicle and an audible alert if another vehicle is detected. Turn signal must be activated, and other system limitations apply. Do not rely exclusively on BVM. It is the driver's responsibility to be aware of the surroundings and ensure it is clear before changing lanes or directions. The Surround View Camera System is a parking support system. The Surround View Monitor cannot completely eliminate blind spots, may not detect every object and does not warn of moving objects. Always check your surroundings before moving your vehicle. See Owner's Manual for details and limitations. ⁸ Overall 5-Star Safety rating applies to 2024 non-hybrid Tucson models with FWD only. Government 5-Star Safety ratings are part of the National Highway Traffic Safety Administration's (NHTSA) New Car Assessment Program (nhtsa.gov).

Protect your family. With Hyundai SmartSense.

Every 2025 Tucson is engineered with Hyundai SmartSense, a remarkable suite of advanced safety and driver-assistance technologies.² To help you avoid accidents in the first place, SmartSense is flush with innovations designed to alert you to potential hazards – including standard features like Forward Collision-Avoidance Assist,³ Lane Keeping Assist⁴ and an intuitive Driver Attention Warning⁵ that monitors for inattentive driving patterns.

As the driver, you'll feel haptic feedback through the steering wheel to alert you whenever Tucson's Blind-Spot Collision Warning⁶ or Lane Keeping Assist are engaged. An array of cameras onboard enable the available Blind-Spot View Monitor and Surround View Monitor to provide a full 360-degree sense of what's happening around your vehicle.⁷ So whenever you and your Tucson make your next move, you'll enjoy the peace of mind that comes from SmartSense technologies safeguarding your journey.



Overall 5-Star Safety Rating
2024 Hyundai TUCSON⁸
Gas engine with FWD



HTRAC All Wheel Drive



Surround View Monitor



Blind-Spot View Monitor

Hyundai SmartSense Technologies



Highway Driving Assist



Lane Following Assist



Lane Keeping Assist



Forward Collision-Avoidance Assist



Blind-Spot Collision Warning



High Beam Assist



Driver Attention Warning





¹Not available on Tucson SE. The hands-free smart liftgate will open when your Proximity Key is within 3 feet of the detection area for at least 3 seconds. Radio transmitters and other vehicle smart keys may interfere in normal operation. See Owner's Manual for details and limitations. ²Tucson claim based on comparison of specifications on manufacturer websites. ³Remote Smart Parking Assist (RSPA) can remotely help park the vehicle. However, several factors can impact RSPA performance. RSPA may not function correctly if one or more of the parking sensors is damaged, dirty or covered, or if weather conditions (heavy rain, snow or fog) interfere with sensor operation. Always inspect the parking area with your own eyes. See Owner's Manual for details and limitations.

TUCSON Limited in Gray Leather

Open the door to modern magic.

The simple act of opening your Tucson feels like a special moment with design and technology that think ahead for you. As you approach, Tucson recognizes your Proximity Key and lets you enter with the key in your pocket or purse. Tucson Limited also includes a fingerprint scanner that lets you start the engine with a mere touch.

Arms full of groceries? Stand behind your Tucson – within a few seconds, it recognizes your Proximity Key and automatically opens the hands-free smart liftgate.¹ Remote-release folding 2nd-row seats provide easy access to a spacious cargo area – complete with an innovative dual-level cargo floor.

Once inside, you'll find an updated interior that is modern design at its best. Even though it's filled with premium features – like available heated and ventilated front seats, heated 2nd-row seats and a wireless phone charger – the feeling is remarkably open and relaxing.

That open feeling extends to the rear passengers as well, compliments of class-leading legroom in the 2nd row.² All the better to relax and enjoy Tucson's available Bose® premium audio that fills the cabin front to rear with rich, sparkling sound.

Even after your arrival, Tucson's magic is still on display. New Hyundai Pay lets you pay for parking right from your touchscreen, while Remote Smart Parking Assist on Tucson Limited takes the squeeze out of tight parking spaces. Just hold down a button on your key fob while standing outside of the vehicle, and you can remotely roll your Tucson forward into a tight spot. Hold another button, and you can guide your Tucson safely back out.³

HD Radio™
Technology

BOSE
Better sound through research®

Android Auto™
Apple CarPlay®

SiriusXM®
Satellite Radio

Dynamic Voice
Recognition



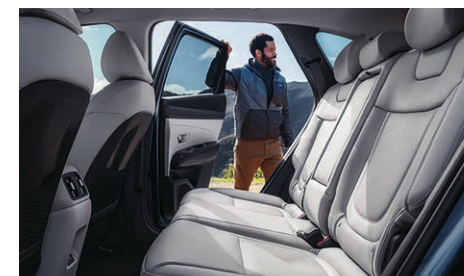
Reclining 60/40 split-folding 2nd-row seats



Wide 12.3" touchscreen navigation display



Fingerprint scanner



Best-in-class 2nd-row legroom



Panoramic sunroof

Introducing Bluelink+: No fees. No trial. No worries.

With the introduction of Bluelink+, Hyundai becomes the first automotive brand to offer its suite of connected car features to new car purchasers without a subscription. Bluelink+ is complimentary with the purchase of your new 2025 Tucson.¹

Bluelink features technology designed to help keep you safe – from automatic collision notifications and automatic emergency assistance if your airbags deploy to enhanced roadside assistance that sends your exact location to a roadside assistance associate.² Bluelink also includes helpful maintenance features like remote diagnostics as well as monthly vehicle health reports. All complimentary with a 2025 Tucson new vehicle purchase for the life of the supporting wireless network technology.³

Our MyHyundai with Bluelink app turns your compatible smartphone, smartwatch or smart home assistant device into a Bluelink remote control that can unlock your Tucson's doors and start the engine and climate controls before you walk out the door.⁴

Starting your Tucson remotely, or with the available Digital Key 2 Premium, also tunes radio and navigation system presets using your Bluelink personal profile.⁵ Want to remotely check if you've left your doors unlocked or the lights on? Just consult your MyHyundai with Bluelink app. Apple Wallet,[®] Google Wallet[®] and Samsung Pass[®] let you share your digital key with trusted friends and family members⁶ – as the primary driver, you control when a shared key can be used, and you can pause or end shared-key access at any time.



Automatic Emergency Assistance

Bluelink offers you 24/7 SOS Emergency Assistance as well as Automatic Collision Notification that calls for help if you're in an accident where your vehicle's airbags deploy.



On-Demand Diagnostics

Run vehicle diagnostics from your touchscreen, report issues at the press of a button and receive monthly vehicle health reports or maintenance reminders by email.



Remote Vehicle Controls

Your compatible smartphone, smart speaker or wearable device lets you remotely start Tucson's engine, set the cabin temperature, unlock the doors and more.



Destination Send-to-Car

Use the MyHyundai with Bluelink app to find restaurants or other points of interest, then send the destination to your Tucson's available navigation system before you start to drive.



Driver Profile Management

When using remote start or your digital key, the radio presets, navigation destinations and other Bluelink profile settings are intact the moment you take a seat inside of your Tucson.⁷



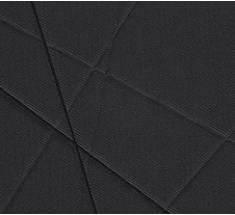
Remote Vehicle Status

Wondering how much fuel is in your tank? If your vehicle's liftgate is open or the doors are unlocked? Your MyHyundai with Bluelink app knows the answers to these questions and more.

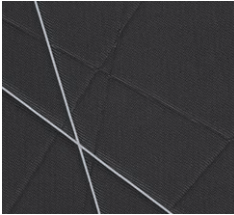


TUCSON Limited in Atlantis Blue

Interior Colors



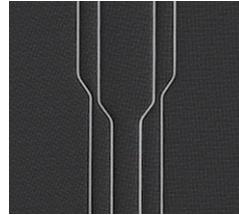
Black Cloth SE



Gray Cloth SE



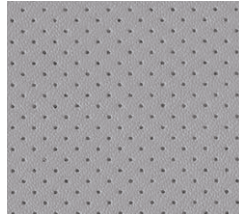
Black Cloth SEL



Gray Cloth SEL



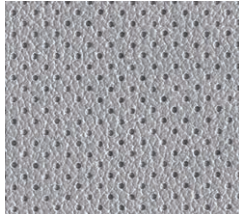
Black H-Tex[®] SEL Convenience / XRT



Gray H-Tex[®] SEL Convenience



Black Leather Limited



Gray Leather Limited

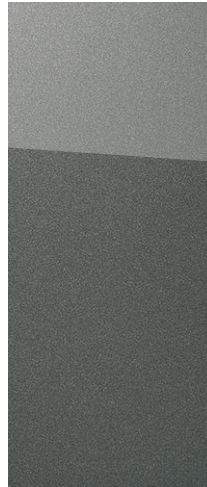
Exterior Colors



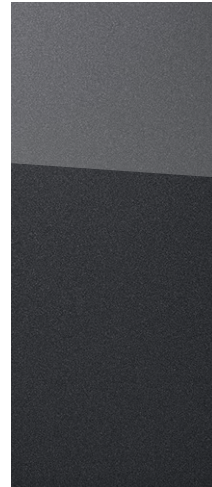
Serenity White Pearl



Shimmering Silver



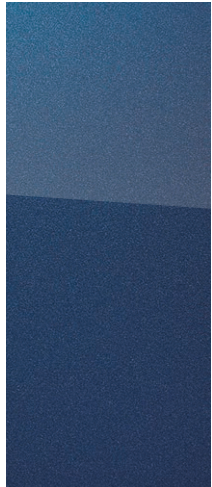
Hampton Gray



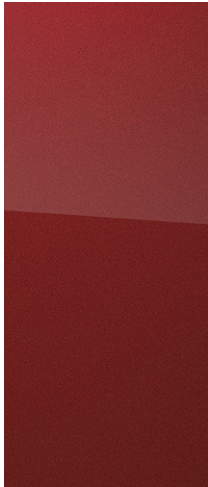
Ecotronic Gray



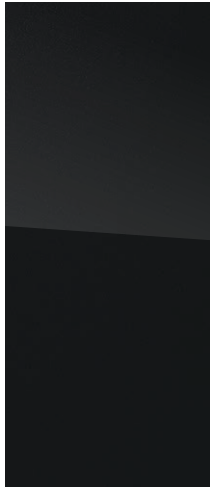
Rockwood Green



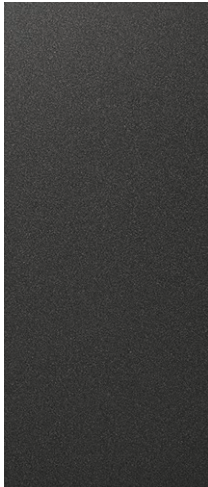
Atlantis Blue



Ultimate Red



Phantom Black



Ecotronic Gray Matte

Wheels

17" Alloy Wheel SE



18" Alloy Wheel SEL / SEL Convenience



18" Alloy Wheel XRT



19" Alloy Wheel Limited



¹ Bluelink+ is available to purchasers and lessees of new 2025 and newer Bluelink-equipped Hyundai models. Bluelink+ requires an active Bluelink subscription agreement subject to the Connected Services Terms and Conditions. Only use Bluelink features and corresponding devices when safe to do so. Cellular and GPS coverage is required. Features, specifications and fees are subject to change. ² Bluelink agents will contact existing emergency service responders. ³ All Bluelink services rely on digital wireless telecommunications technology outside of our control and in the control of the wireless carriers who provide the telecommunications technology. 4G LTE cellular networks are controlled and maintained by third-party wireless carriers. Telecommunication technologies have been known to change over time. If and when these networks change and discontinue services or the underlying technology required to support Bluelink is obsolete, then the connected services will not work, and we will be forced to cancel impacted subscription services. ⁴ Requires active Bluelink Advanced subscription (complimentary for the original owner). Remote climate control available on properly equipped models with fully automatic temperature control. Remote stop only available when in remote start mode. ⁵ Near Field Communication (NFC) digital key requires a compatible iPhone,[®] Apple Watch,[®] Google Pixel or Samsung Galaxy[®] phone. Not all Android, Apple or Samsung devices are compatible. Digital key sharing requires an active Bluelink Advanced subscription (complimentary for the original owner). See your Owner's Manual for details and limitations. ⁶ Apple[®] is a registered trademark of Apple Inc. Samsung[®] is a registered trademark of Samsung Electronics Inc. Google[®] is a trademark of Google LLC. ⁷ Bluelink profile settings vary by trim level.

TUCSON

SE

2.5L GDI /MPI Engine

187 HP

178 LB-FT



Popular Features
17" alloy wheels
Low- and high-beam LED headlights
Bodycolor exterior door handles and side mirrors
12.3" color touchscreen display with AM/FM/HD Radio™
Proximity Key with push-button start
Dual front and rear USB ports
Wireless Android Auto™ and Apple CarPlay®
Bluelink+ Connected Car System

TUCSON

XRT

2.5L GDI /MPI Engine

187 HP

178 LB-FT



Popular Features
Exclusive 18" alloy wheels
Dark chrome accent front grille and black Hyundai logo
Premium half-mirror LED Daytime Running Lights
Black side mirrors and gloss black side window surrounds
Leather-wrapped steering wheel and ambient LED interior lighting
Black H-Tex® seating surfaces
Black headliner and pillar trim panels
Exclusive bridge-type roof side rails Tow hitch

Exterior Dimensions	TUCSON
Wheelbase	108.5 in
Overall Length	182.7 in
Overall Width	73.4 in
Overall Height FWD / AWD	65.6 / 66.3 in

TUCSON

SEL

2.5L GDI /MPI Engine

187 HP

178 LB-FT



Popular Features
18" alloy wheels
Roof side rails and heated side mirrors
Dual automatic temperature control and auto-defogging windshield
8-way power driver seat plus power lumbar support
Heated front seats
Digital Key 2 Premium and wireless phone charger
Hands-free smart power liftgate with auto open
Floor console-mounted 2nd-row air conditioning vents

TUCSON

Limited

2.5L GDI /MPI Engine

187 HP

178 LB-FT



Popular Features
19" alloy wheels
Blind-Spot View Monitor Surround View Monitor
Premium door sill plates Fingerprint scanner
Leather-trimmed seats and ventilated front seats
Heated 2nd-row seats and heated steering wheel
Bose® premium audio Full-color Head-up Display
Remote Smart Parking Assist Rain-sensing windshield wipers
Panoramic sunroof

Interior Dimensions	TUCSON
Headroom without sunroof – front / 2nd row	40.1 / 39.5 in
Headroom with sunroof – front / 2nd row	38.3 / 39.5 in
Headroom with panoramic sunroof – front / 2nd row	38.1 / 39.0 in
Legroom – front / 2nd row	41.4 / 41.3 in

TUCSON

SEL Conveni

2.5L GDI /MPI Engine

187 HP

178 LB-FT



Popular Features
LED taillights
H-Tex® seating surfaces
12.3" digital instrument cluster
12.3" navigation system
Navigation-based Smart Cruise Control with Curve Control
Dynamic Voice Recognition
Ambient LED interior lighting
Leather-wrapped steering wheel
Smart Cruise Control 2
Highway Driving Assist
Auto-dimming rearview mirror
Forward Attention Warning
Over-the-Air Map Updates
Power tilt-and-slide sunroof

HTRAC All Wheel Drive Option
HTRAC All Wheel Drive

TUCSON

EPA MPG Estimates (City/Highway/Combined)

25/33/28 MPG

24/30/26 MPG

FWD
8-speed A/T with SHIFTRONIC®

AWD
8-speed A/T with SHIFTRONIC®

EPA estimates for comparison only. Mileage may vary. Your actual mileage will vary with options, driving conditions, driving habits and the vehicle's condition.

Interior Dimensions	TUCSON
Shoulder Room – front / 2nd row	57.6 / 56.0 in
Passenger Volume	108.2 cu ft
Cargo Capacity – 2nd-row seats up / down	38.7 / 74.8 cu ft
Total Interior Volume without panoramic sunroof	146.9 cu ft

Power & Handling	SE	SEL	SEL C	XRT	Ltd
187 hp/178 lb-ft Smartstream 2.5L GDI/MPI 4-cylinder engine	●	●	●	●	●
Idle Stop & Go	●	●	●	●	●
8-speed automatic transmission with SHIFTRONIC®	●	●	●	●	●
Column-mounted Shift-by-Wire gear selector with paddle shifters	–	–	–	–	●
Drive Mode Select and Downhill Brake Control	●	●	●	●	●
HTRAC All Wheel Drive	○	○	○	○	○
Electronic Parking Brake with Automatic Vehicle Hold	●	●	●	●	●
2,000-lb towing capacity and trailer pre-wiring	●	●	●	●	●
Exterior Features	SE	SEL	SEL C	XRT	Ltd
Automatic headlights with High Beam Assist	●	●	●	●	●
LED Daytime Running Lights	●	●	●	●	●
Low- and high-beam LED headlights: reflector type projector type	● –	● –	● –	● –	– ●
LED taillights	–	–	●	●	●
Premium half-mirror LED Daytime Running Lights	–	–	–	●	●
XRT unique front and rear fascias	–	–	–	●	–
Silver painted front and rear lower fascias	–	–	–	–	●
Dark chrome accent front grille and black Hyundai logo	–	–	–	●	●
Bodycolor exterior door handles and side mirrors	●	●	●	–	●
Bodycolor exterior door handles and black side mirrors	–	–	–	●	–
Bodycolor side mirrors with premium accent	–	–	–	–	●
Side mirrors with LED turn signal indicators	–	–	●	●	●
Acoustic-laminated windshield and solar front glass	●	●	●	●	●
Acoustic-laminated front side windows	–	–	–	–	●
Roof side rails and heated side mirrors	–	●	●	●	●
Power tilt-and-slide sunroof	–	–	●	–	–
Panoramic sunroof	–	–	–	–	●
Height-adjustable hands-free smart liftgate with auto open	–	●	●	●	●
Gloss black window surround	–	–	–	●	–
Rear privacy glass	–	●	●	●	●
Interior & Convenience Features	SE	SEL	SEL C	XRT	Ltd
Proximity Key with push-button start	●	●	●	●	●
12.3" digital instrument cluster	–	–	●	–	●
Full-color Head-up Display	–	–	–	–	●
Tilt-and-telescopic steering wheel with audio, phone and cruise controls	●	●	●	●	●
8-way power driver seat plus power lumbar support	–	●	●	●	●
8-way power front passenger seat	–	–	–	–	●
Leather-wrapped steering wheel and ambient LED interior lighting	–	–	●	●	●

Interior & Convenience Features	SE	SEL	SEL C	XRT	Ltd
Reclining 60/40 split-folding 2nd-row seats with center armrest	●	●	●	●	●
Leather-trimmed seats and ventilated front seats	–	–	–	–	●
H-Tex® seating surfaces	–	–	●	●	–
Heated front seats	–	●	●	●	●
Heated 2nd-row seats and steering wheel	–	–	–	–	●
Integrated Memory System for driver's seat and side mirrors	–	–	–	–	●
Dual automatic temperature control and auto-defogging windshield	–	●	●	●	●
Floor console-mounted 2nd-row air conditioning vents	–	●	●	●	●
Smart Cruise Control with Stop & Go	●	●	●	●	●
Intelligent Speed Limit Assist	●	●	●	●	●
Auto-dimming rearview mirror with HomeLink®	– –	– –	● –	– –	● ●
Remote Smart Parking Assist	–	–	–	–	●
Rearview camera	●	●	●	●	●
Advanced Safety	SE	SEL	SEL C	XRT	Ltd
Forward Collision-Avoidance Assist with Pedestrian/Cyclist Detection and Junction Turning Detection	●	●	●	●	●
Lane Keeping Assist and Lane Following Assist	●	●	●	●	●
Driver Attention Warning and Rear Occupant Alert	●	●	●	●	●
Blind-Spot Collision Warning	●	●	●	●	●
Rear Cross-Traffic Collision-Avoidance Assist	●	●	●	●	●
Safe Exit Warning	●	●	●	●	●
Parking Distance Warning – Reverse Forward Side	–	–	–	–	●
Parking Collision-Avoidance Assist – Reverse	–	–	–	–	●
Highway Driving Assist	–	–	●	–	●
Navigation-based Smart Cruise Control with Curve Control	–	–	●	–	●
Blind-Spot View Monitor and Surround View Monitor	–	–	–	–	●
Audio & Connected Car Technology	SE	SEL	SEL C	XRT	Ltd
12.3" color touchscreen display with AM/FM/HD Radio™	●	●	–	●	–
12.3" navigation system	–	–	●	–	●
SiriusXM® Satellite Radio	●	●	●	●	●
Wireless Android Auto™ and Apple CarPlay®	●	●	●	●	●
Bose® premium audio with 8 speakers	–	–	–	–	●
Wireless phone charger	–	●	●	●	●
Over-the-Air Map Updates	–	–	●	–	●
Digital Key 2 Premium	–	●	●	●	●
Bluelink+ Connected Car System	●	●	●	●	●
USB ports: Front (1 data/charge + 1 charge), 2nd row (2 charge)	●	●	●	●	●

● Standard ○ Optional – Not Available SEL C = SEL Convenience Trim Ltd = Limited Trim



Hyundai Hope On Wheels®

Helping Kids Fight Cancer Since 1998



Hope comes standard on every Hyundai.

Each time we sell a Hyundai, a portion goes to Hyundai Hope On Wheels® to help find a cure for childhood cancer. Over the last 26 years, Hyundai Hope On Wheels has donated \$250 million to pediatric cancer research. Hope is our greatest feature. And it comes standard on every Hyundai. For more information, please visit HyundaiHopeOnWheels.org.



America's Best Warranty

POWERTRAIN
LIMITED WARRANTY

10 YEARS 100,000 MILES

NEW VEHICLE
LIMITED WARRANTY

5 YEARS 60,000 MILES

ANTI-PERFORATION
WARRANTY

7 YEARS UNLIMITED MILES

24/7 ROADSIDE
ASSISTANCE

5 YEARS UNLIMITED MILES



Hyundai
Complimentary
Maintenance

COMPLIMENTARY MAINTENANCE INCLUDES FOUR (4) BASIC MAINTENANCE SERVICE VISITS THAT MUST BE USED IN THE FIRST 3 YEARS OR 36,000 MILES, WHICHEVER COMES FIRST. Basic maintenance includes Hyundai-approved oil and oil filter change (except for electric vehicles and fuel cell electric vehicles), multi-point inspection plus tire rotation. Driving at normal factory-scheduled maintenance intervals would cover four services for the first 3 years or 36,000 miles. Any additional services and parts are excluded. Offer valid only for original owners of new 2025 model year Hyundai vehicles. See your Hyundai dealer for details and limitations.



Owner
Assurance

Our commitment to Hyundai owners does not end with the transfer of keys. Wherever the road takes you, we have got your back with Hyundai Owner Assurance, an umbrella of services and benefits that includes America's Best Warranty, 24/7 Roadside Assistance, innovative safety and car care features...and more.

While the information contained in this brochure is based on the latest information available at the time of printing, specifications and equipment can change. Feature comparisons are based on competitor information available at the time of printing. Although the information contained in this brochure is believed to be correct, accuracy cannot be guaranteed. No warranty or guarantee is being extended in this brochure, and Hyundai reserves the right to change product specifications and equipment at any time, without notice, without incurring obligations. Some vehicles are shown with optional equipment. Specifications apply to U.S. vehicles only. Please contact your Hyundai dealer or visit HyundaiUSA.com for current vehicle specifications or details on any of the programs or services listed here. As part of Hyundai's commitment to a responsible environment, this brochure was printed using paper certified by the Forest Stewardship Council®. FSC® certification helps ensure that the highest social and environmental standards are met in the making of the paper we use, contributing to conservation, responsible management and community-level benefits for people near the forests.



©2024 HYUNDAI NP020T2025